



W
WATKINS

RK
REIMERS KAUFMAN
CONCRETE PRODUCTS

C
CHRISTENSEN
CONCRETE PRODUCTS

KCB
KEARNEY
CRETE & BLOCK

Manufactured Stone Veneer | Outdoor Living | Accessories



Whitebark® Cliffstone®



ELDORADO STONE™

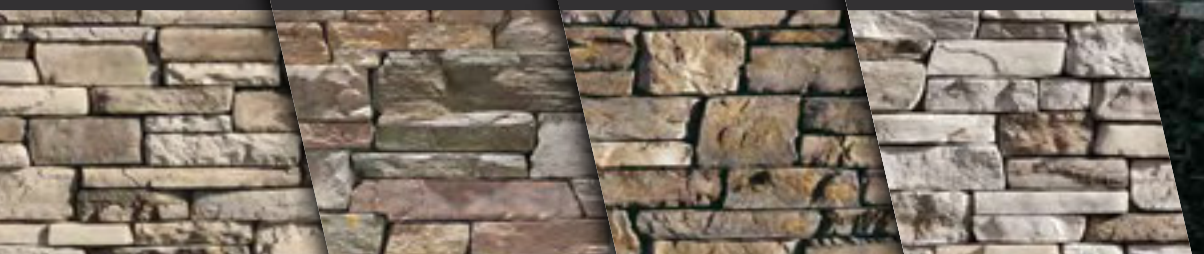
For more than 50 years, Eldorado Stone has pushed the boundaries of possibilities, harnessing nature's power and creativity to design a collection of premium architectural stone and brick veneer profiles. Handcrafted with artistic colors and expressive textures that verge from traditional to contemporary, Eldorado Stone products offer the ideal backdrop for curating spaces that lead to a lifetime of new moments to enjoy.



Eldorado Stone®
Cliffstone®
Manufactured Stone Veneer

Complement a variety of modern looks with refined, flat-planed faces and distinctive textural details. This stone is available in an array of graceful and modern colors.

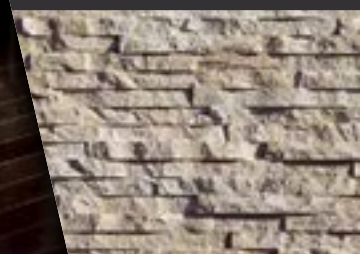
- Boardwalk
- Manzanita®
- Montecito®
- Whitebark®



Eldorado Stone®
European Ledge®
Manufactured Stone Veneer

Combine old-world stonework with modern design. The balance of weather-worn surface contours and precision-cut stone adds dimension to any exterior or interior.

- Cottonwood®





Eldorado Stone®

Marquee 24®

Manufactured Stone Veneer

Incorporate the authentic textures and subtle hues of limestone into your design. A versatile, sleek stone veneer allows you to bring any vision to life.

Dove Tail



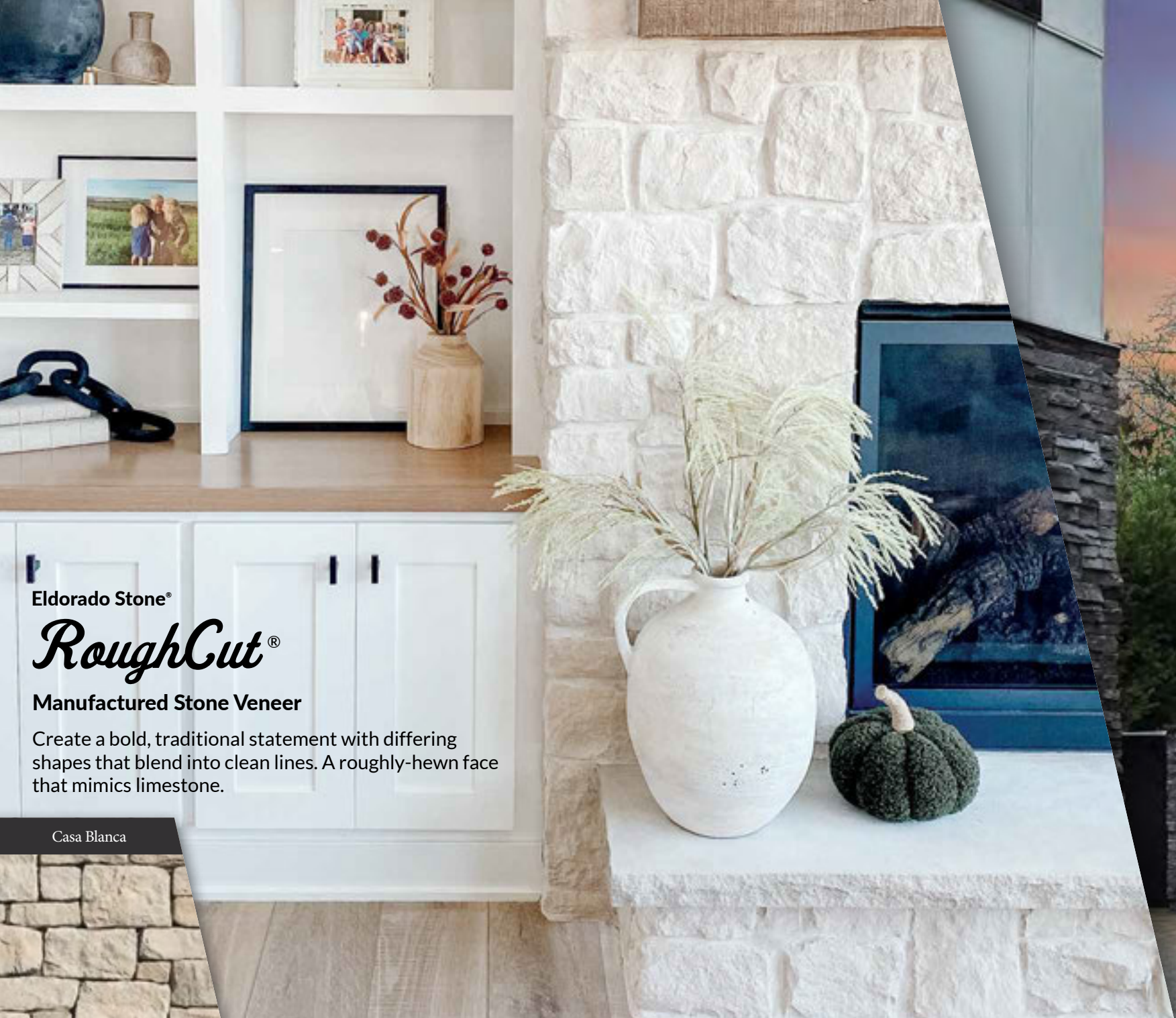
Eldorado Stone®

Mountain Ledge®

Manufactured Stone Veneer

Achieve a contemporary look with warmth and texture, in a variety of versatile earth tones. Incremental heights facilitate selection and reduce installation costs.

Charleston



Eldorado Stone®
RoughCut®
Manufactured Stone Veneer

Create a bold, traditional statement with differing shapes that blend into clean lines. A roughly-hewn face that mimics limestone.

Casa Blanca



Eldorado Stone
Stacked Stone®
Manufactured Stone Veneer

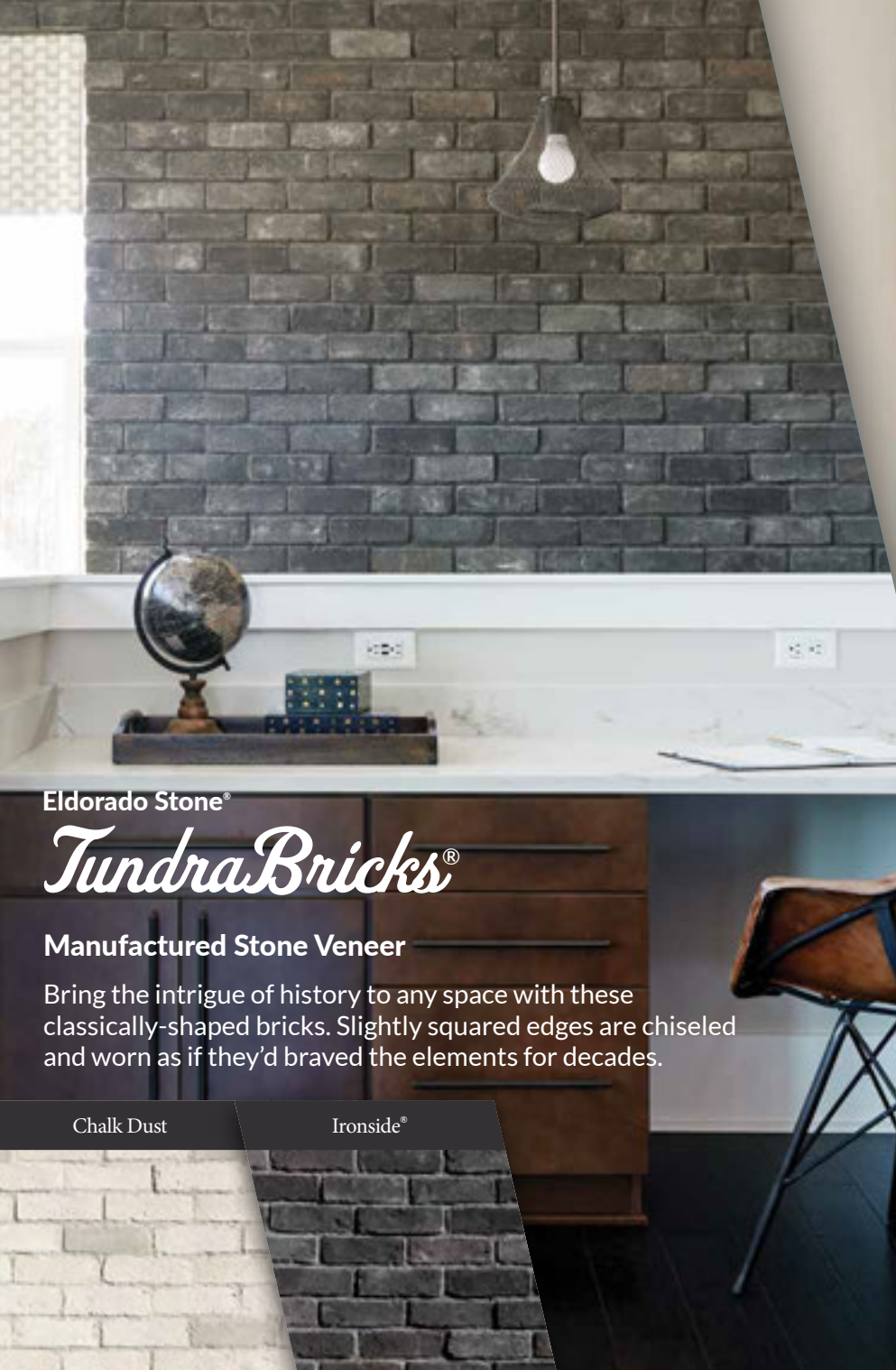
Give the appearance of a precision hand-laid, small stone stack with the simplicity of a panel system. Panels are easy to install, while still providing intricate detail.



Daybreak

Nantucket

Silver Lining



Eldorado Stone®
Tundra Bricks®

Manufactured Stone Veneer

Bring the intrigue of history to any space with these classically-shaped bricks. Slightly squared edges are chiseled and worn as if they'd braved the elements for decades.

Chalk Dust Ironside®



Eldorado Stone®
Vintage Ranch®

Wood Plank

Enjoy the warmth and inviting texture of reclaimed barn wood. This American classic is composed of hand-selected boards culled for their timeless beauty.

Stratuswood™





Blend of StoneCraft™ Chardonnay
& Tennessee LedgeStone

STONECRAFT

I N D U S T R I E S

Stone has a unique intricacy that is simply captivating. With such diversity in shape, color and texture, it's easy to see why it dramatically enhances any exterior or interior space. The StoneCraft commitment to craftsmanship captures this diversity, reproducing every detail with countless hours spent hand-chiseling each natural stone before carefully replicating them through a proprietary mold technique. At StoneCraft we honor the masonry traditions of the past and promise to deliver quality and affordability with every stone we make.



StoneCraft®
Heritage®
 Manufactured Stone Veneer

Each stone in the Heritage profile was originally hand-chiseled by masons to create rugged rectangular ashlar shapes. The stone installs into randomly coursed patterns making an impressive visual statement.

Bucktown



StoneCraft®
Ledgestone®
 Manufactured Stone Veneer

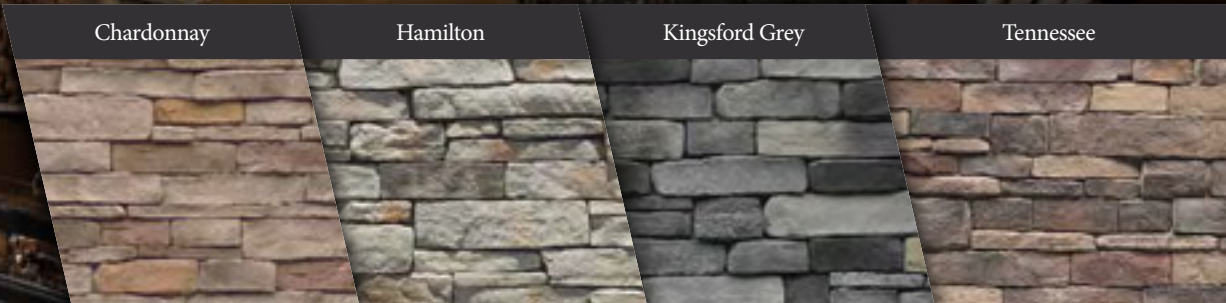
The linear lines of this versatile profile offer an appealing contrast of rugged texture and contemporary design. Its dry-stack application creates intriguing shadows through varying stone depths.

Chardonnay

Hamilton

Kingsford Grey

Tennessee





Eldorado Stone®
Accents & Accessories

Manufactured Stone Veneer

Details turn an ordinary project into an extraordinary one. Each accent and accessory is created by hand to meticulously emphasize unique color hues and sculptural characteristics. Finalize your design with the essence of true masonry craftsmanship.

Eldorado Stone® Montecito® Cliffstone®

**Eldorado Stone®
Chiseled Edge™ Accents**
Available in Buckskin, Earth, Smoke & Taupe



Chiseled Edge™ Hearthstone
20"L x 20"D x 2"H



Chiseled Edge™ Wainscot Sill
19.75"L x 3"D x 2"H (FACE)
TO 2.5"H (BACK)



Split Edge™ Hearthstone
20"L x 20"D x 2"H



Split Edge™ Wainscot Sill
20"L x 3"D x 2"H (FACE)
TO 2.5"H (BACK)

StoneCraft® Accents
Available in Cream



Hearthstone
19"L x 20"D x 1.5"H



Rock Face Wainscot Sill
19.75"L x 3"D x 2"H (FACE)
TO 2.5"H (BACK)

**Eldorado Stone® Ashlar Accents
Trim Stones & Keystone**
Available in Buckskin, Earth, Smoke & Taupe



6" x 8" Trim Stone
APPROX. 2" THICK



9" x 5" Trim Stone
APPROX. 2" THICK



Keystone
11.5" TALL x 9"W (TOP) x 5"W (BOTTOM)
APPROX. 1.5" TO 2" THICK



6" x 8" Trim Stone
APPROX. 2" THICK



Keystone
10" TALL x 8"W (TOP) x 5.5"W (BOTTOM)
APPROX. 1.5" THICK

**StoneCraft® Trim Stone
& Keystone Accents**
Available in Cream

**Eldorado Stone®
Electrical Box**
Available in Buckskin, Earth, Smoke & Taupe

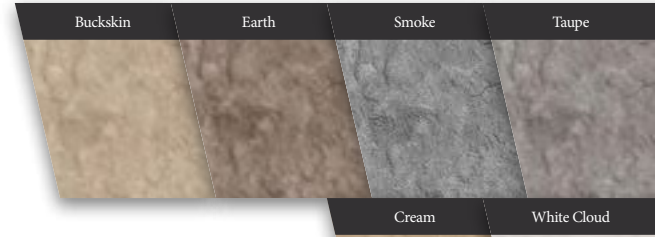


Electrical Box
8" x 8" (APPROX. 1.75" THICK)

**StoneCraft®
Light Box**
Available in Buckskin, Earth, Smoke & Taupe



Light Box
8"W x 11"H (APPROX. 1.5" THICK)

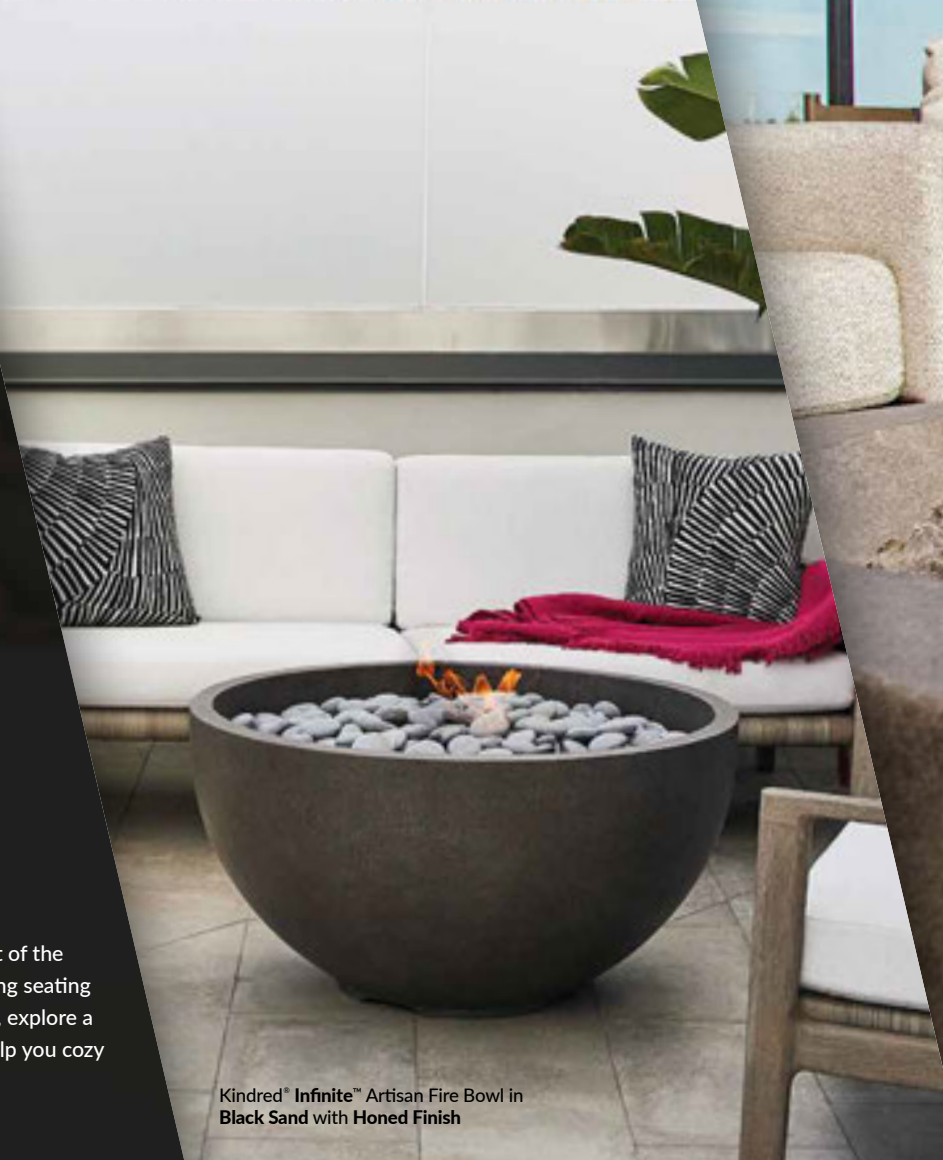




KINDRED®

OUTDOORS + SURROUNDS

Kindred Outdoors & Surrounds brings the warmth and light of the fire into your living space. From elegant fire bowls, to inviting seating walls, to fireplace surrounds, to signature outdoor kitchens, explore a variety of distinguishing looks and premium solutions to help you cozy up, connect, and gather together.



Kindred® **Infinite™** Artisan Fire Bowl in Black Sand with Honed Finish



Kindred® **Talus™** Artisan Fire Bowl in Aged Teak with Travertine Finish



Kindred® **The Carmela™** Fireplace Surround in Oak Barrel with a Honed Finish

Kindred®
Outdoor Cabinets

& Signature Kitchens

Kindred Outdoors has redefined how to build outdoor living spaces with a collection of strong, yet lightweight building blocks. The blocks quickly assemble into custom barbecue islands, fireplaces, fire pits and more—ready to be dressed with stone or brick within hours.



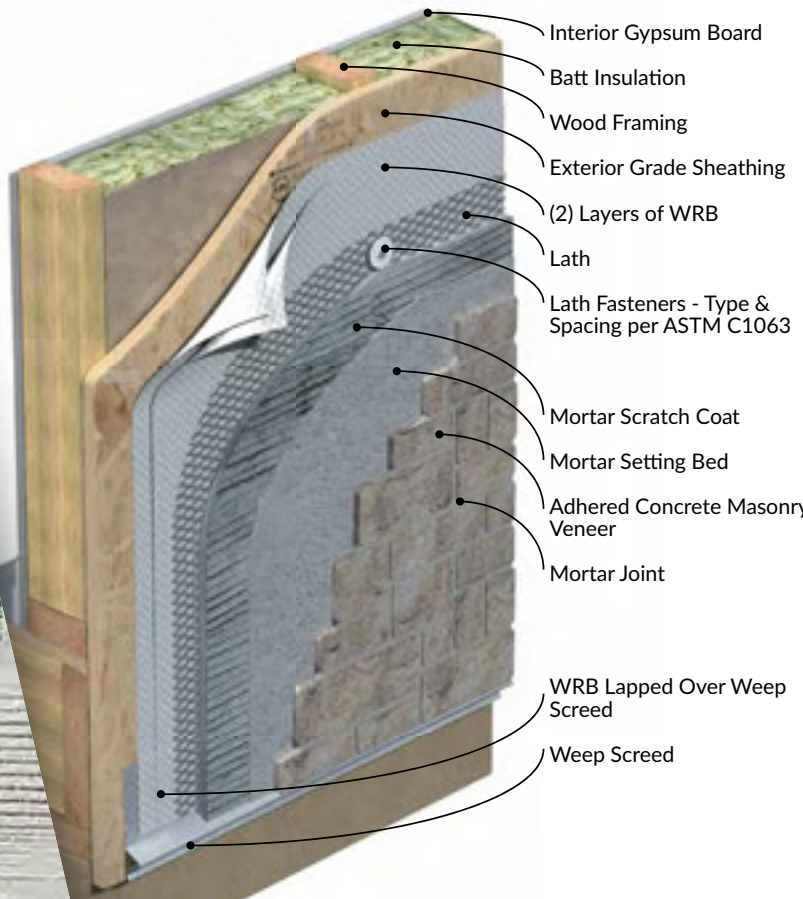
Kindred® Outdoor Cabinets assembled with appliances and ready for masonry



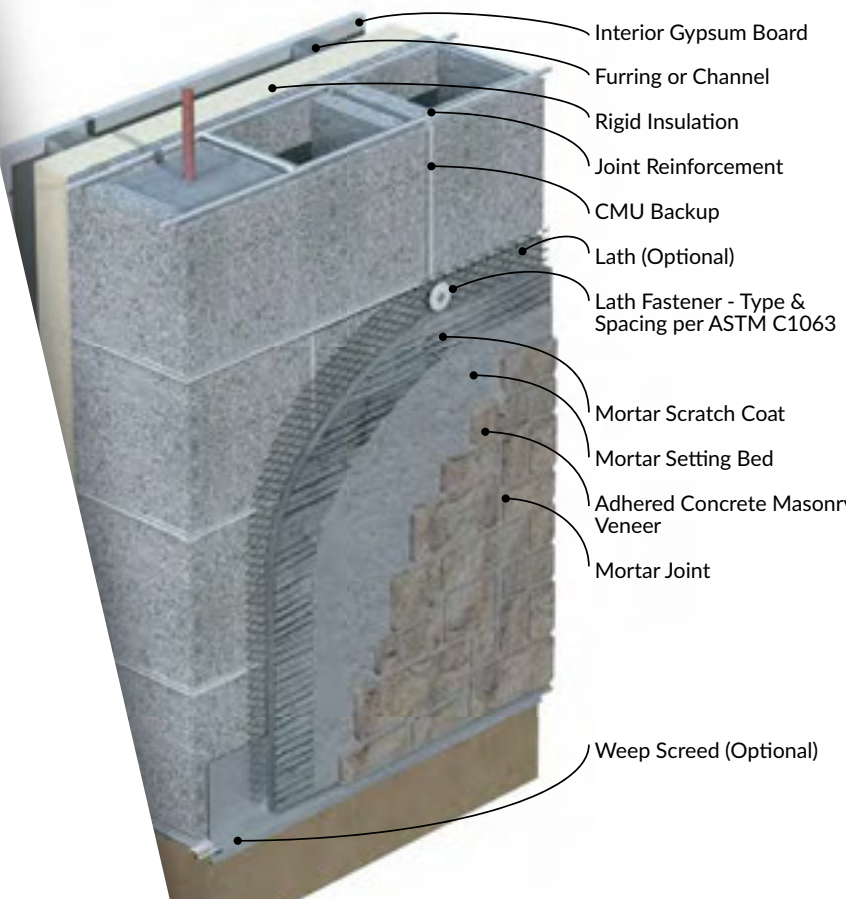
Kindred® Outdoor Cabinets finished with a fieldedge stone

Drain-N-Dry™ Lath

Drain-N-Dry™ Lath, reinvents the draining and drying wall system by unifying each critical component into a single, high-performance product—one that requires less fasteners and fewer penetrations. By seamlessly integrating a chemical and corrosion resistant fiberglass lath, a 10mm rainscreen and a secondary water-resistant barrier into individual 150-square foot, easy-to-cut, lightweight rolls, Drain-N-Dry Lath reduces your installation time to help you quickly deliver a final product that will last the test of time.



Installation Over Wood Framing



Installation Over Concrete Masonry Units



Eldorado Stone® Silver Lining Stacked Stone

Dealer Info

Watkins Concrete Block

14306 Giles Road
Omaha, NE 68138
Phone: (402) 896-0900
Fax: (402) 896-8611
watkinsconcreteblock.com

Reimers-Kaufman Concrete Products

6200 Cornhusker Hwy
Lincoln, NE 68507
Phone: (402) 434-1855
Fax: (402) 434-1877
reimerskaufman.com

Christensen Concrete Products Company

3990 W US Hwy 30
Grand Island, NE 68803
Phone: (308) 384-7030
Fax: (308) 384-7031

Kearney Crete & Block

2908 US-30
Kearny, NE 68847
Phone: (308) 237-3126
Fax: (308) 234-5310
kearneycreteandblock.com

Warranty Information

ELDORADO STONE® PRODUCTS 50-YEAR TRANSFERABLE EXPRESS LIMITED WARRANTY

- Subject to the following terms, Westlake Royal Stone LLC ("WRS") warrants under this express limited warranty ("Warranty") to the original purchaser and subsequent owners of its Eldorado Stone® brand manufactured stone or brick veneer (collectively, the "Product" or the "Products") that for fifty (50) years from the date of sale of the Product, the Product will not blister, peel, flake, delaminate or crack excessively (each, a "Defect") as a result of manufacturing defects when used on structures (each, a "Structure") conforming to local building codes and installed in accordance with the National Concrete Masonry Association's written instructions issued before and closest in time to original date of the installation of the Product in the Structure. The definition of "veneer" contained in the International Building Code is determinative for purposes of establishing what Products constitute WRS's manufactured stone or brick veneer and are covered by this Warranty.
- In the event of a Defect, WRS will, at its option, either: (1) pay the reasonable replacement cost of the defectively manufactured Product; (2) provide a replacement of the defective Product or a Product of a similar design; or (3) pay the reasonable cost for repair of the defective Product. This Warranty applies only to Products manufactured by WRS and does not apply to any other products or materials, including exterior walls, exterior wall envelopes, backing to which Products are secured, or water-resistive barriers.
- This Warranty runs with the sale or transfer of the Structure into which the Products have been incorporated to subsequent owners of the Structure, but the warranty period as to such subsequent owners is limited to fifteen (15) years from the original date of sale of the Product.
- No warranty whatsoever is made with respect to the manufacture or performance of materials or components of construction not sold or manufactured by WRS, including, but not limited to, mortar, lath, weather resistant barriers, doors, windows, sealants, flashings, roofing, copings, sheathing and framing. Further, WRS makes no warranties whatsoever with respect to aesthetics, design and engineering of the Structure into which Products are incorporated, or workmanship involved in the application of any Products warranted hereunder. The Product is not waterproof and should not be used on exterior or interior steps or risers. The Product must be incorporated into a wall assembly designed by a building professional that contains adequate mechanisms for water management. WRS has no responsibility for damage caused by moisture intrusion through the building envelope or around any of the building envelope components or by vapor transmission from the inside of the Structure to a moisture sensitive part of the wall assembly.
- This Warranty covers only manufacturing defects in the Products. WRS's manufacturing process has been designed to imitate the random beauty and nature of real stone. As such, stone surfaces on the Products may contain small air holes or surface anomalies. These differences add to the overall character of the Products and are not considered manufacturing defects. Changes in the appearance of Products caused by normal weathering or efflorescence, which is a natural phenomenon of all concrete products, are also not considered manufacturing defects. Normal weathering is defined as exposure to sunlight and extremes of weather and atmosphere, which will cause any colored surface to fade, chalk, or accumulate dirt or stains.
- Without limiting anything else in this Warranty, WRS disclaims and assumes no liability for the following:
 - improper use, application or installation of Products;
 - use of Products as part of improperly designed or constructed assemblies or Structures or with defective adjacent materials or assemblies;
 - failure to follow applicable specifications, instructions and construction details;
 - use of any sealing or coating on the Product other than one that is silane or siloxane and based in strict compliance with sealant manufacturer's instructions;
 - other design or construction defects, deficiencies and failures on a Structure where Product is used;
 - undertaking on-site inspections or any on-site activities or making oral statements at the site;
 - any damage or injury whatsoever caused in whole or in part by acts of God, natural phenomenon or physical abuse, such as, but not limited to, falling objects, projectiles, fire, earthquake, floods, windstorm, hail, tornadoes, lightning, hurricanes, other abnormal weather conditions, pests, chemical fumes, foreign substances in the air, misuse, vandalism, civil disobedience, war, damage caused by remodeling or renovation;
 - damage resulting from moisture intrusion, mold, settlement of Structure or other Structure or wall movement;
 - discoloration or deterioration due to airborne contaminants, contact with any chemicals or paint, staining or oxidations;
 - any accumulation of water or moisture in wall assemblies;

- negligence or accidents by any party or parties in maintaining the Products, including, but not limited to, use of a pressure washer or harsh or acid chemicals of any nature, including vinegar, to clean;
 - replacement of Product if Product is mixed with other chemicals or materials not approved by WRS in writing;
 - any cause beyond WRS's control; and
 - any workmanship, aesthetics or other damage or injury not solely and directly caused by a manufacturing defect in Products as covered under this Warranty.
- This Warranty is exclusive, the only warranty made by WRS with respect to the Products, and is in lieu of all other warranties or remedies of any nature whatsoever to the original purchaser or subsequent owners under any theory of liability, whether in contract, tort, statutory law or otherwise, except for actual economic damages for personal physical bodily injury. All other warranties, representations or remedies with respect to the Products, whether oral, written, express or implied or imposed by law, are disclaimed by WRS and are waived by the original and subsequent purchasers, particularly the implied warranties of merchantability or fitness for a particular purpose or arising from a course of dealing, usage or trade practice, or any warranty against patent infringement or warranty for work performed in a workmanlike manner. WRS shall not be liable under any circumstances for any incidental, special, indirect or punitive damages to any party whatsoever, including but not limited to, loss of profits, damage to the Structure or its contents, and attorney's fees. This exclusion of damages includes, but is not limited to, payments of any nature made because of actual or potential liability to others, damages to any other part of the Structure to which the Products are incorporated or damage to any other property.
 - WRS shall have no further obligation or liability of any kind, other than as stated in this Warranty, and it is further agreed and understood that the price paid for Products is consideration for the limitation of WRS's liability hereunder.
 - Warranty coverage is limited as set forth herein and does not cover labor to remove or install Products and does not cover the cost of shipping replacement Product. The remedies contained herein shall be sole and exclusive.
 - WRS's obligations under this Warranty shall only begin if the original purchaser or subsequent owner notifies WRS, in writing, within sixty (60) days of actual or constructive notice of the alleged Defect. WRS shall be allowed a reasonable period of time and authorization to remove samples of the Product, so as to perform any testing WRS deems necessary to investigate and determine the cause of the alleged Defect. The original purchaser or subsequent owner shall make temporary repairs in a timely manner to prevent further damage to the Structure, contents of the Structure, and the Products until the cause of the alleged Defect is determined and permanent repair recommendations may be made, as applicable.
 - WRS's obligation to supply replacement Product pursuant to this Warranty shall become null and void if, in the sole judgment of WRS, any of the following events shall occur: (i) if after installation of the Products there are any alterations or repairs made to the Structure that affect any component of the wall assembly of which Products are a part in any way; (ii) if the original purchaser or subsequent owner or any of their respective tenants fail to use reasonable care in maintaining the Products before and after installation; (iii) if the Products are installed in a manner that causes them to be repeatedly or continuously wet, such as if installed in the direct path of a water sprinkler, pool, jacuzzi, or similar water device; or (iv) if the Products are installed in an area that exposes them to de-icing salts or other harsh chemicals.
 - Applicability of the Magnusson-Moss Act is hereby disclaimed.
 - Any provision of this Warranty that is prohibited or unenforceable in any jurisdiction shall, as to such jurisdiction, be ineffective to the extent of such prohibition or unenforceability without invalidating the remaining provisions hereof or affecting the validity of enforceability of such provision in any other jurisdiction.
 - WRS's failure at any time to enforce any of the terms or conditions stated herein shall not be construed to be a waiver of such provisions.
 - This Warranty shall be interpreted under the laws of the State of New York.
 - Neither the sales personnel nor other agents of WRS are authorized to make warranties about the Products. Oral statements by WRS employees or agents do not constitute warranties, shall not be relied upon by the original purchaser or subsequent owner or any third party, and are not part of the contract for sale or warranty as stated herein. No distributor, dealer or representative of WRS has the authority to change or modify this Warranty either orally or in writing in any respect. The entire and final contract is embodied in this Warranty and no other warranties are given beyond those set forth in this Warranty.

STONECRAFT INDUSTRIES® PRODUCTS 50-YEAR TRANSFERABLE EXPRESS LIMITED WARRANTY

- Subject to the following terms, Westlake Royal Stone LLC ("WRS") warrants under this express limited warranty ("Warranty") to the original purchaser and subsequent owners of its StoneCraft Industries® brand manufactured stone or brick veneer (collectively, the "Product" or the "Products") that for fifty (50) years from the date of sale of the Product, the Product will not blister, peel, flake, delaminate or crack excessively (each, a "Defect") as a result of manufacturing defects when used on structures (each, a "Structure") conforming to local building codes and installed in accordance with the National Concrete Masonry Association's written instructions issued before and closest in time to original date of the installation of the Product in the Structure. The definition of "veneer" contained in the International Building Code is determinative for purposes of establishing what Products constitute WRS's manufactured stone or brick veneer and are covered by this Warranty.
- In the event of a Defect, WRS will, at its option, either: (1) pay the reasonable replacement cost of the defectively manufactured Product; (2) provide a replacement of the defective Product or a Product of a similar design; or (3) pay the reasonable cost for repair of the defective Product. This Warranty applies only to Products manufactured by WRS and does not apply to any other products or materials, including exterior walls, exterior wall envelopes, backing to which Products are secured, or water-resistive barriers.
- This Warranty runs with the sale or transfer of the Structure into which the Products have been incorporated to subsequent owners of the Structure, but the warranty period as to such subsequent owners is limited to fifteen (15) years from the original date of sale of the Product.
- No warranty whatsoever is made with respect to the manufacture or performance of materials or components of construction not sold or manufactured by WRS, including, but not limited to, mortar, lath, weather resistant barriers, doors, windows, sealants, flashings, roofing, copings, sheathing and framing. Further, WRS makes no warranties whatsoever with respect to aesthetics, design and engineering of the Structure into which Products are incorporated, or workmanship involved in the application of any Products warranted hereunder. The Product is not waterproof and should not be used on exterior or interior steps or risers. The Product must be incorporated into a wall assembly designed by a building professional that contains adequate mechanisms for water management. WRS has no responsibility for damage caused by moisture intrusion through the building envelope or around any of the building envelope components or by vapor transmission from the inside of the Structure to a moisture sensitive part of the wall assembly.
- This Warranty covers only manufacturing defects in the Products. WRS's manufacturing process has been designed to imitate the random beauty and nature of real stone. As such, stone surfaces on the Products may contain small air holes or surface anomalies. These differences add to the overall character of the Products and are not considered manufacturing defects. Changes in the appearance of Products caused by normal weathering or efflorescence, which is a natural phenomenon of all concrete products, are also not considered manufacturing defects. Normal weathering is defined as exposure to sunlight and extremes of weather and atmosphere, which will cause any colored surface to fade, chalk, or accumulate dirt or stains.
- Without limiting anything else in this Warranty, WRS disclaims and assumes no liability for the following:
 - improper use, application or installation of Products;
 - use of Products as part of improperly designed or constructed assemblies or Structures or with defective adjacent materials or assemblies;
 - failure to follow applicable specifications, instructions and construction details;
 - use of any sealing or coating on the Product other than one that is silane or siloxane and based in strict compliance with sealant manufacturer's instructions;
 - other design or construction defects, deficiencies and failures on a Structure where Product is used;
 - undertaking on-site inspections or any on-site activities or making oral statements at the site;
 - any damage or injury whatsoever caused in whole or in part by acts of God, natural phenomenon or physical abuse, such as, but not limited to, falling objects, projectiles, fire, earthquake, floods, windstorm, hail, tornadoes, lightning, hurricanes, other abnormal weather conditions, pests, chemical fumes, foreign substances in the air, misuse, vandalism, civil disobedience, war, damage caused by remodeling or renovation;
 - damage resulting from moisture intrusion, mold, settlement of Structure or other Structure or wall movement;
 - discoloration or deterioration due to airborne contaminants, contact with any chemicals or paint, staining or oxidations;
 - any accumulation of water or moisture in wall assemblies;

- negligence or accidents by any party or parties in maintaining the Products, including, but not limited to, use of a pressure washer or harsh or acid chemicals of any nature, including vinegar, to clean;
 - replacement of Product if Product is mixed with other chemicals or materials not approved by WRS in writing;
 - any cause beyond WRS's control; and
 - any workmanship, aesthetics or other damage or injury not solely and directly caused by a manufacturing defect in Products as covered under this Warranty.
- This Warranty is exclusive, the only warranty made by WRS with respect to the Products, and is in lieu of all other warranties or remedies of any nature whatsoever to the original purchaser or subsequent owners under any theory of liability, whether in contract, tort, statutory law or otherwise, except for actual economic damages for personal physical bodily injury. All other warranties, representations or remedies with respect to the Products, whether oral, written, express or implied or imposed by law, are disclaimed by WRS and are waived by the original and subsequent purchasers, particularly the implied warranties of merchantability or fitness for a particular purpose or arising from a course of dealing, usage or trade practice, or any warranty against patent infringement or warranty for work performed in a workmanlike manner. WRS shall not be liable under any circumstances for any incidental, special, indirect or punitive damages to any party whatsoever, including but not limited to, loss of profits, damage to the Structure or its contents, and attorney's fees. This exclusion of damages includes, but is not limited to, payments of any nature made because of actual or potential liability to others, damages to any other part of the Structure to which the Products are incorporated or damage to any other property.
 - WRS shall have no further obligation or liability of any kind, other than as stated in this Warranty, and it is further agreed and understood that the price paid for Products is consideration for the limitation of WRS's liability hereunder.
 - Warranty coverage is limited as set forth herein and does not cover labor to remove or install Products and does not cover the cost of shipping replacement Product. The remedies contained herein shall be sole and exclusive.
 - WRS's obligations under this Warranty shall only begin if the original purchaser or subsequent owner notifies WRS, in writing, within sixty (60) days of actual or constructive notice of the alleged Defect. WRS shall be allowed a reasonable period of time and authorization to remove samples of the Product, so as to perform any testing WRS deems necessary to investigate and determine the cause of the alleged Defect. The original purchaser or subsequent owner shall make temporary repairs in a timely manner to prevent further damage to the Structure, contents of the Structure, and the Products until the cause of the alleged Defect is determined and permanent repair recommendations may be made, as applicable..
 - WRS's obligation to supply replacement Product pursuant to this Warranty shall become null and void if, in the sole judgment of WRS, any of the following events shall occur: (i) if after installation of the products there are any alterations or repairs made to the Structure that affect any component of the wall assembly of which Products are a part in any way; (ii) if the original purchaser or subsequent owner or any of their respective tenants fail to use reasonable care in maintaining the Products before and after installation; (iii) if the Products are installed in a manner that causes them to be repeatedly or continuously wet, such as if installed in the direct path of a water sprinkler, pool, jacuzzi, or similar water device; or (iv) if the Products are installed in an area that exposes them to de-icing salts or other harsh chemicals.
 - Applicability of the Magnusson-Moss Act is hereby disclaimed.
 - Any provision of this Warranty that is prohibited or unenforceable in any jurisdiction shall, as to such jurisdiction, be ineffective to the extent of such prohibition or unenforceability without invalidating the remaining provisions hereof or affecting the validity of enforceability of such provision in any other jurisdiction.
 - WRS's failure at any time to enforce any of the terms or conditions stated herein shall not be construed to be a waiver of such provisions.
 - This Warranty shall be interpreted under the laws of the State of New York.
 - Neither the sales personnel nor other agents of WRS are authorized to make warranties about the Products. Oral statements by WRS employees or agents do not constitute warranties, shall not be relied upon by the original purchaser or subsequent owner or any third party, and are not part of the contract for sale or warranty as stated herein. No distributor, dealer or representative of WRS has the authority to change or modify this Warranty either orally or in writing in any respect. The entire and final contract is embodied in this Warranty and no other warranties are given beyond those set forth in this Warranty.



W
WATKINS

RK
REIMERS KAUFMAN
CONCRETE PRODUCTS

C
CHRISTENSEN
CONCRETE PRODUCTS

KCB
KEARNEY
CRETE & BLOCK

A NEBCO COMPANY

Eldorado Stone® Ironside® TundraBrick®

Because Eldorado Stone, StoneCraft and Kindred replicate natural stone, variations can, and should be expected. Even though colors in this brochure are as close to the actual stone as possible, photographic and printing techniques — and actual viewing conditions — can alter perception of color. It is recommended to obtain a sample before placing an order.
Watkins/Kearney Crete & Block/Reimers Kaufman Concrete Products/Christensen Concrete Products logos and brochure ©2022 Watkins Concrete Block Company.
Eldorado Stone/StoneCraft/Kindred Outdoors & Surrounds/Drain-N-Dry logos, product names and photography ©2022 Westlake Royal Stone LLC.