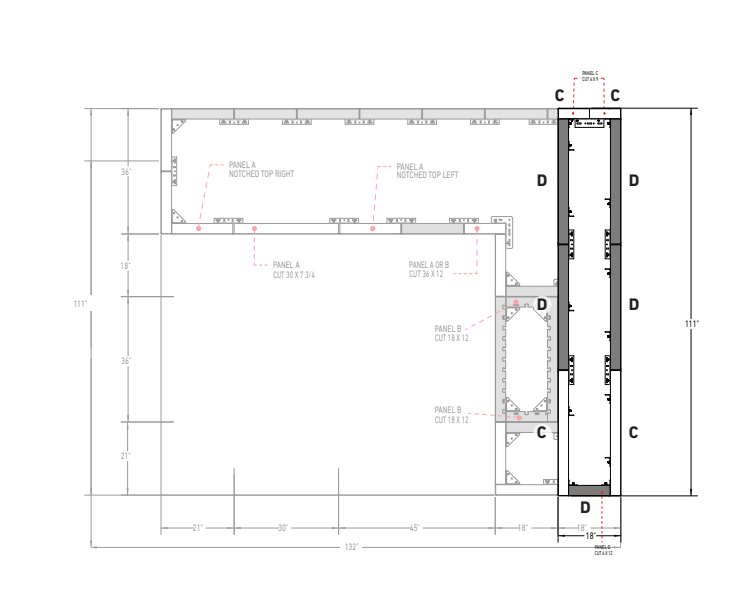
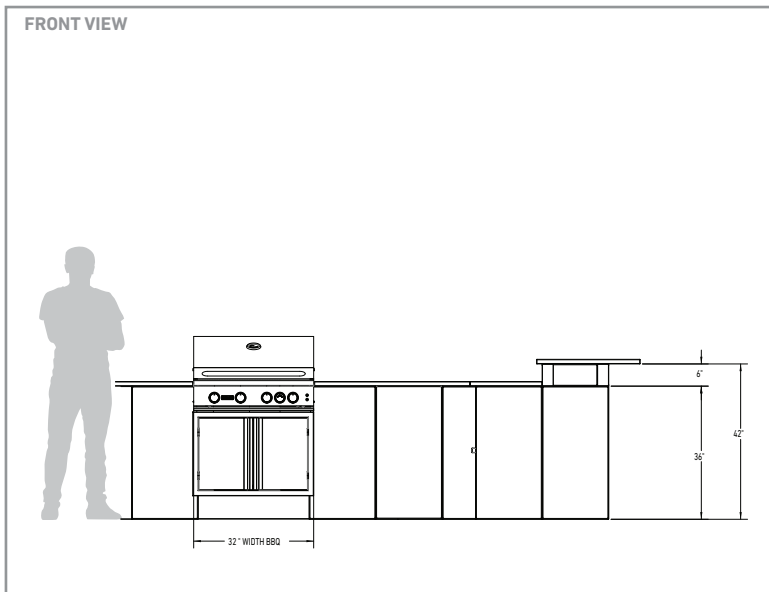
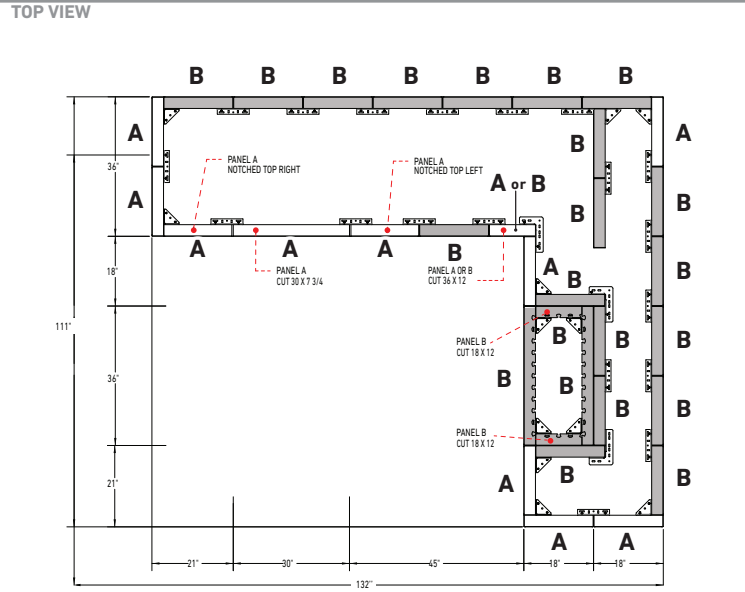


BBQ WITH LUXURY COUNTER & BAR



REQUIRED PANELS

- CLOSED END **A** 18 x 36 PANEL **10x**
- A OR B** 18 x 36 PANEL **23x**
- CLOSED END **C** 6 x 36 PANEL **4x**
- C OR D** 6 x 36 PANEL **5x**

IMPORTANT: 18 x 36 panels are sold in pair/layer or in full pallet only. 6 x 36 panels are sold per unit or in layer or in full pallet.

REQUIRED HARDWARE

- ANCHOR SLIDE AND NUT **150x**
- JOINING PLATE **54x**
- OUTER CORNER **22x**
- INNER CORNER **6x**
- STRETCHER **0x**

TOTAL WEIGHT
(PANELS & HARDWARE) **5105 Lbs**

IMPORTANT: It is recommended to follow the BBQ manufacturer's specifications for ventilation and clearances. Belgard is not responsible for the conformity of connections, clearances and ventilation. BBQ, countertop and accessories are not included.